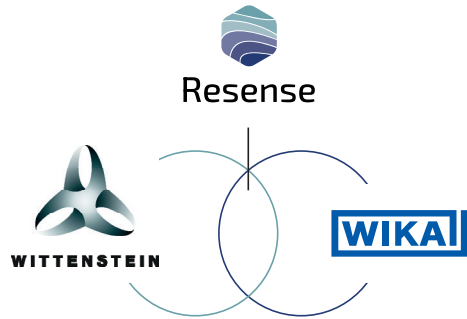


Resense is a Joint Venture of Two German Family Companies



Market Leader in Industrial Drive Technology

2,800 employees and
> 500 million EUR revenue

Innovation partner:
pre-development started
at WITTENSTEIN

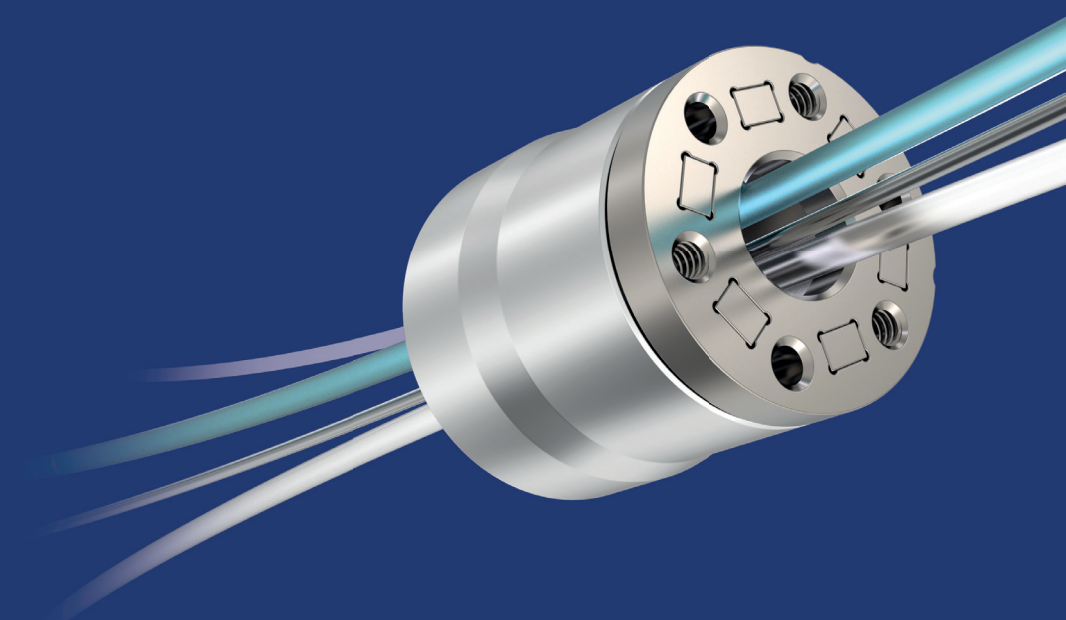
Market Leader in Measurement Technology

11,000 employees and
> 1 billion EUR revenue

Manufacturing partner:
> 45 million sensors
sold per year



Sabrina Hock
Business Development
sabrina.hock@resense.io

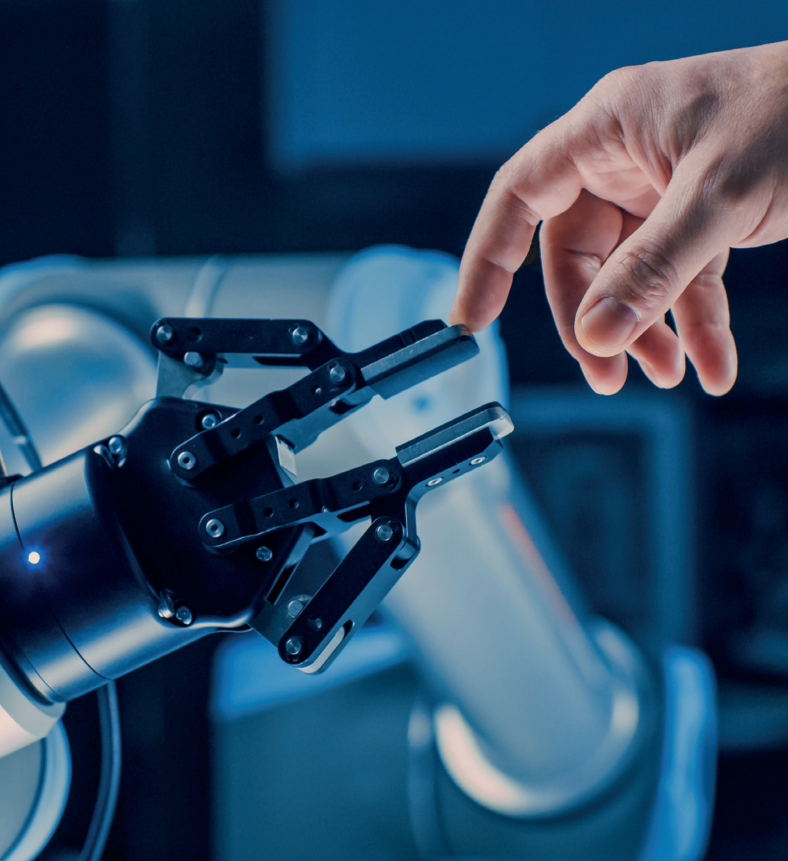


Resense GmbH

Alexander-Wiegand-Str. 30, 63911 Klingenberg, Germany
info@resense.io | +49 9372 132-0 | www.resense.io

Follow us on 

www.resense.io



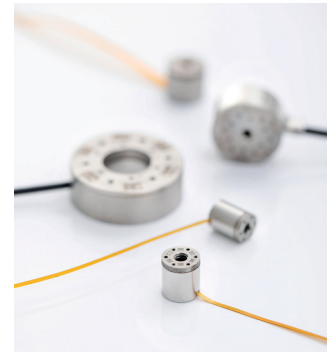
Our Miniature F/T Sensors

Advancing the Future Market of Haptic Sensors

HEX 8 / 10 / 12 / 21 / 32

Main USPs at a Glance

- Small size of up to $\varnothing 8$ mm
- Hollow shaft option
- Redundant measurement (safety)



Technical Data

	HEX8	HEX10	HEX12	HEX21	HEX32
Dimensions	NEW				
Diameter in mm	8.4	10.0	12.5	21.0	32.0
Height in mm	10.9	10.9	10.9	10.9	11.1
Weight in g	1.4	2.0	3.3	9.9	50.0

Nominal measurement range

Fx, Fy, Fz in N	± 25	± 25	± 25	± 50	± 125
Mx, My, Mz in Nm	± 0.100	± 0.125	± 0.125	± 0.500	± 2.250

Technical specifications

Resolution	± 10 bit (true), 3σ
Accuracy	1%
Crosstalk	3%
Overload capacity	300%

Product features

Material	Titanium grade 5	
Protection class	IP20	
Temperature range	0 - 50 °C	
Technology	Silicon	Foil strain gauges
Cable	Flex cable with axial/radial cable outlet and Sub-D-HD connector	Round cable with radial cable outlet and Sub-D-HD connector

Come with Electronics and Software

Get to Know our Plug-and-Measure Sensor Kit

Miniature Electronics Box

Small Enough for Onboard Integration

- 6-channel force/torque and temperature
- Matrix calculation and compensation
- Embedded signal and filtering options

Technical Data

Dimensions	54 x 25 x 12.6 mm
Supply voltage	5 V
Interfaces	USB, UART
Sample rate	100 Hz, 500 Hz, 1 kHz
Resolution (ADC)	24 bit
Temperature range	0 - 50 °C

NEW



We Empower Your Application

In Haptics and Robotics

Medical Robotics



Surgical instruments

Haptic input devices

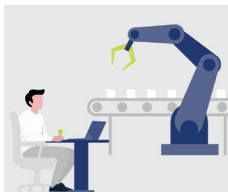
Service Robotics



Humanoid robot wrist

Robot fingertips

Industrial Robotics



Industrial grippers

Control interfaces

Force/Torque Explorer

Application Software and Packages

- View & record real-time sensor data
- Export and import data in multiple formats
- Additional C++/Python utilities available

